

New touch screen SITA

The new generation of UV control system

The integrated design of the new touch screen controllers offers maximum functionality and simplifies the control of the UV plant:

SITA Touch Screen is the ideal solution in SITA UV control applications and allows to simplify set, read and manage all the necessary parameters for the measures and the operation of the system. The intuitive touch-screen display presents more information on screen, so users make the most of the available functions

Compatibility and interfacing

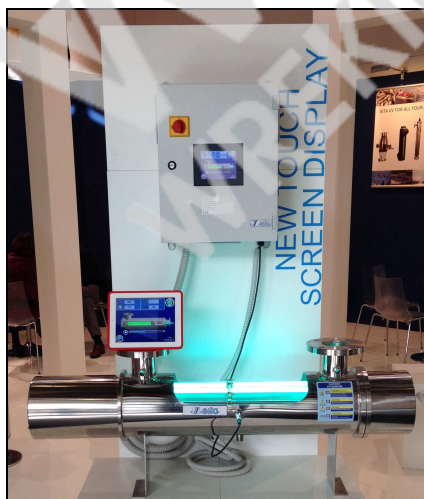
Thanks to its compatibility SITA Touch-Screen seamlessly integrates into your business environment:

- Digital I/O, analog I/O, including **4/20 temperature** and **4/20 irradiance** outputs
- Communication via ports: **USB, serial, Ethernet, and CANopen**
- Communication protocol: **Uni-TE, Modbus, Modbus TCP/IP**
- Crystal-clear display to be more user-friendly for nice viewing and for accurate control even with gloves

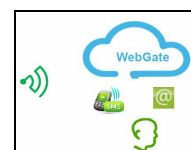
Get remote access to disinfection data

Whatever your constraints you can stay connected !

With a specific app you increase the availability of your operations. This application for **smartphones** and **tablets**, available from the App Store and Google Play, gives you remote access to a fully operable mirror-view of your application.



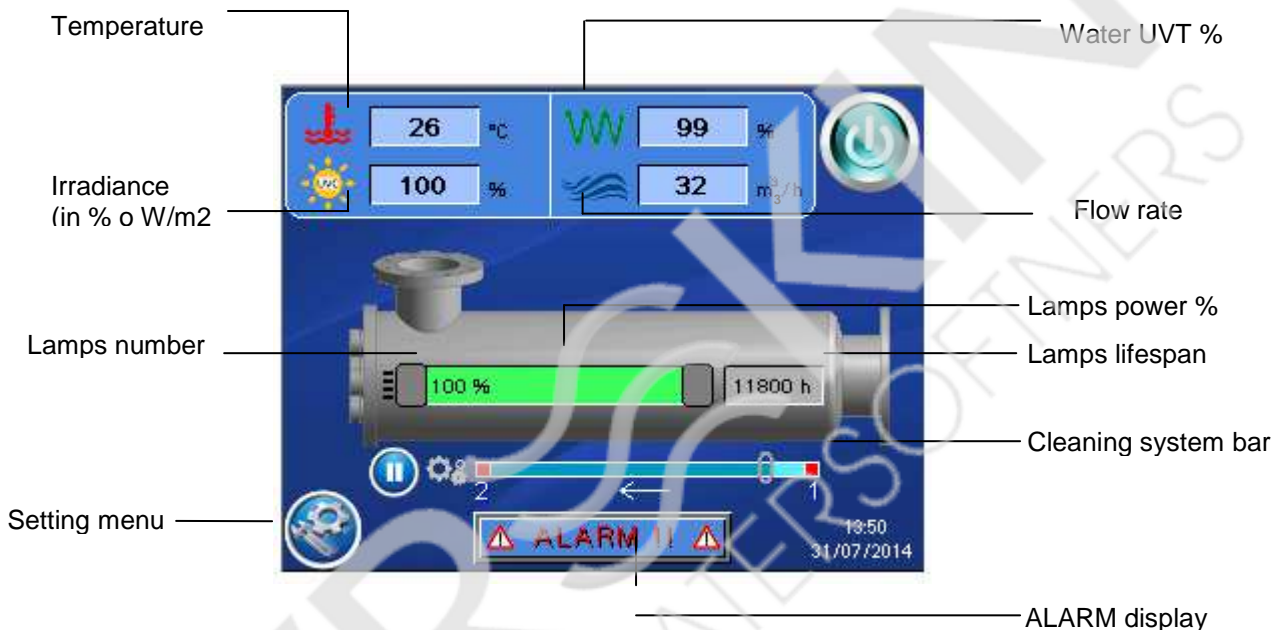
You can also connect remotely for free via **WebGate**, using a PC browser to visualize and control your system. Sita touch-screen can also send emails or SMS on event for remote warnings.



Main Screen

In the main screen the user can easily control and read all UV system parameters:

- Chamber Temperature
- UV Irradiance (in three different unit)
- Water UV Transmittance
- Flow Rate
- Lamps Power
- Lamps lifespan
- Cleaning System Status
- Activate Alarms



Settings Menu

In the main Setting Manu the user can set, read and manage all the necessary parameters for the measure and the operation of the system.



Circle menu

Each button identifies the access to the setting of a specific component / system optional of the UV system (if not available the button will appear greyed out and the submenu is not available):



- lamps
- Electrical panel
- Sensor
- cleaning system
- parameters of flow rate and water UVT %

Vertical bar menu

In the vertical bar manu the user can access to other setting of the system:



DATALOG - EVENTS

-) It allows to view the data log and system events.

LANGUAGES MENU

-) To change the language of the user and the system.

MAINTENANCE MODE

-) To set the plant in maintenance mode.

PASSWORD MENU

-) To access password-protected menu. The user cannot enter in this menu unless authorized by the manufacturer.